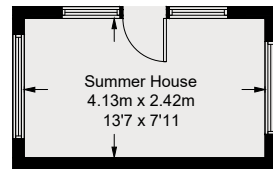
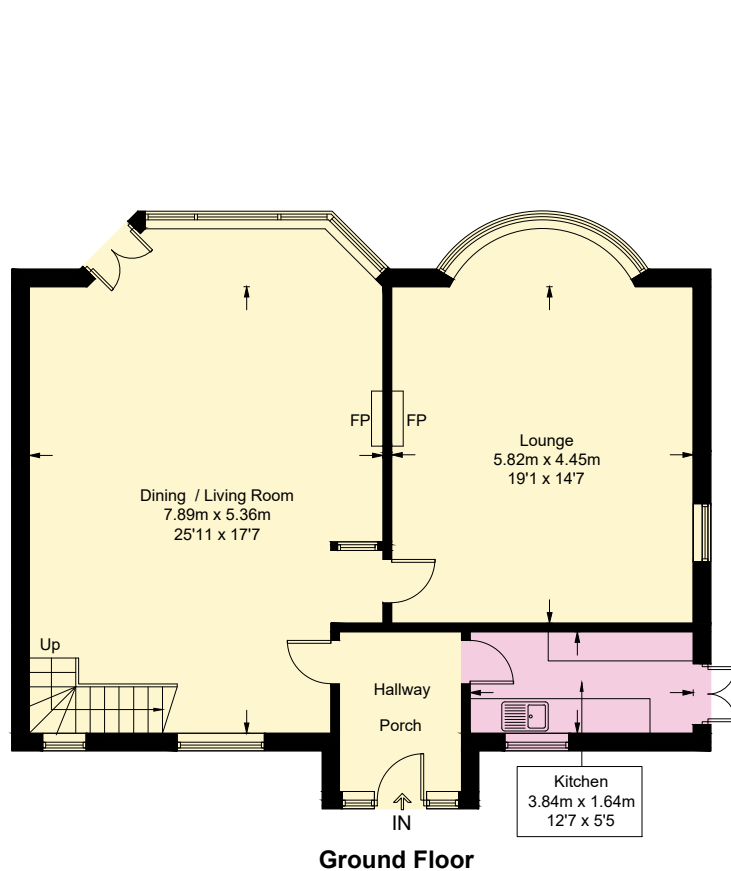
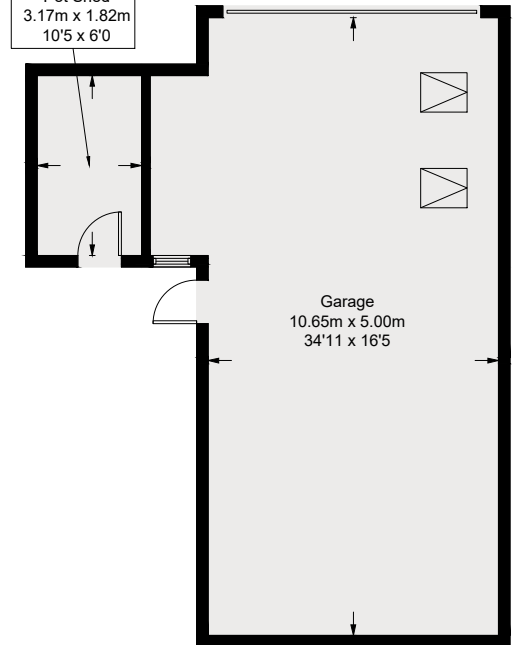
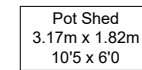
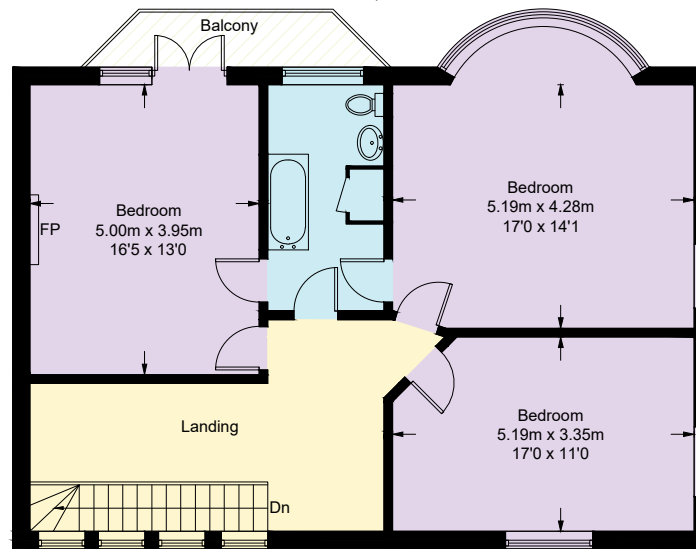


1 Bryn Teg Drive Rhos-on-Sea LL28 4AF

Approximate Gross Internal Area = 187.8 sq m / 2021 sq ft
Garage / Summer House / Pot Shed = 72.3 sq m / 778 sq ft
Total = 260.1 sq m / 2799 sq ft



(Not Shown In Actual Location / Orientation)



(Not Shown In Actual Location / Orientation)

This plan is for layout guidance only. Not drawn to scale unless stated. Windows and door openings are approximate. Whilst every care is taken in the preparation of this plan, please check all dimensions, shapes and compass bearings before making any decisions reliant upon them.